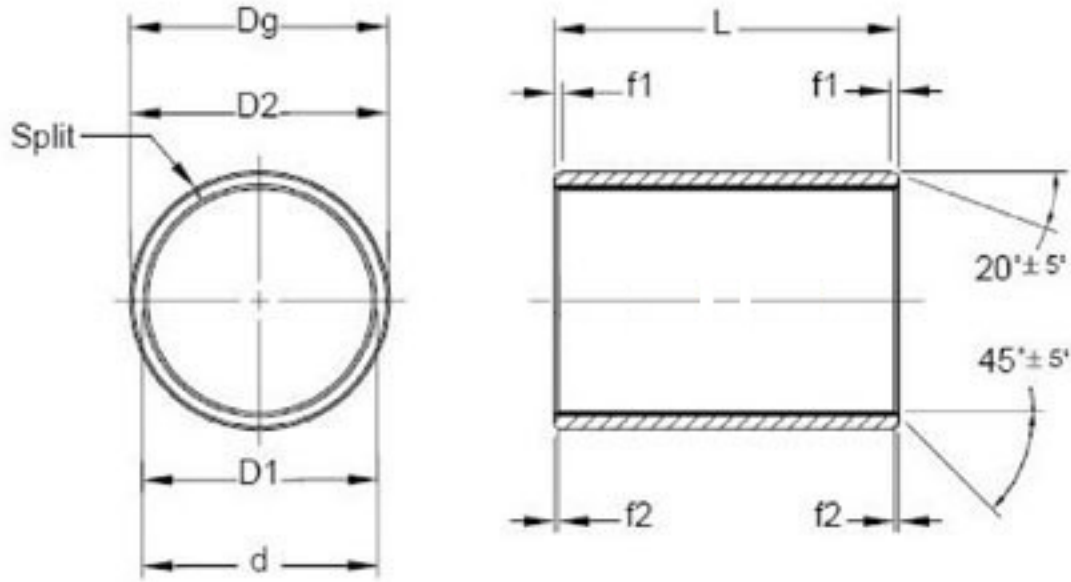


Operating Limits:

Temperature	Max. Pressure	Max. Speed	Suit For
-90 to +260 °C	4.0 Mpa	30m/s	PTFE stainless steel oil seals Bearings

Typical Design:



Typical Sizes:

NO.	d1*d2*L (mm)	NO.	d1*d2*L (mm)	NO.	d1*d2*L (mm)	NO.	d1*d2*L (mm)
1	23*30*29.5	40	50*60*40	79	65*75*25	118	85*95*45
2	25*30*20	41	50.8*54*25.5	80	65*75*28	119	85*100*35
3	30*35*20	42	50*65*41	81	65*75*30	120	85*100*45
4	30*35*30	43	52*60*28	82	65*75*35	121	85*100*55
5	30*35*46	44	53*60*54	83	65*75*46	122	85*100*63
6	30*37*38	45	53*65*46	84	65*75*50	123	89*107.95*56
7	30*38*34	46	53*65*50	85	65*76.2*55	124	88.95*107.95*56
8	31*38*20	47	54*66.7*50.8	86	65*76.2*88	125	90*100*36
9	35*40*20	48	54*76.2*50.8	87	65*76.2*100	126	90*100*45
10	35*40*30	49	55*60*25	88	65*85*48	127	90*100*55
11	35*42*30	50	55*60*35	89	65*85*58	128	100*110*40
12	35*45*20.5	51	55*65*30	90	65*90*85	129	110*125*40
13	40*45*30	52	55*65*45	91	66*85*40	130	110*125*48
14	40*48*35	53	55*65*50	92	68*80*40	131	110*125*77
15	40*49*35	54	55*65*60	93	68*80*58		
16	40*50*25	55	55*68*30	94	68*80*60		
17	40*50*35	56	55*68*34	95	70*73*19		
18	41*44.5*19.5	57	56*65*31	96	70*80*30		
19	42*50*43	58	57*65*28	97	70*80*35		
20	45*50*25	59	58*68*34	98	70*80*40		
21	45*50*35	60	59*70*37	99	70*85*35		
22	45*55*30	61	59*70*87	100	70*85*42		
23	45*55*35	62	60*68*25	101	75*85*25		
24	45*55*40	63	60*68*35	102	75*85*28		
25	45*55*48	64	60*68*45	103	75*85*30		
26	45*55*52	65	60*68*48	104	75*85*40		
27	45*60*28	66	60*70*25	105	75*85*42		
28	45*60*32	67	60*70*28	106	75*85*54		
29	47*55*16	68	60*70*30	107	75*85*60		
30	47*55*20	69	60*70*35	108	75*85*57		
31	47*55*24	70	60*70*40	109	75*85*57		
32	47*55*27.5	71	60*70*42	110	75*85*60		
33	47.5*54*25.5	72	60*73*32	111	75*87*45		
34	48*55*36	73	60*73*42	112	75*89*50		
35	49*55*25	74	60*75*42	113	75*90*58		
36	50*55*25	75	61*70*40	114	80*95*55		
37	50*55*35	76	63.5*70*20	115	80*95*55		
38	50*60*25	77	63.5*70*33	116	80*100*100		
39	50*60*28	78	63.5*70*35	117	85*95*40		